

Push-Lok™ PCB Standoffs

SMARTER FASTENERS FOR MORE SECURE CIRCUIT BOARDS

NEW Push-Lok™ PCB Standoffs precisely space daughter boards from chassis or mother boards without the need of offline swaging of expensive screw machine standoffs. The base portion, when the pin is driven using the P-Punch spring-loaded attaching tool, spreads the fastener portion to secure the standoff.

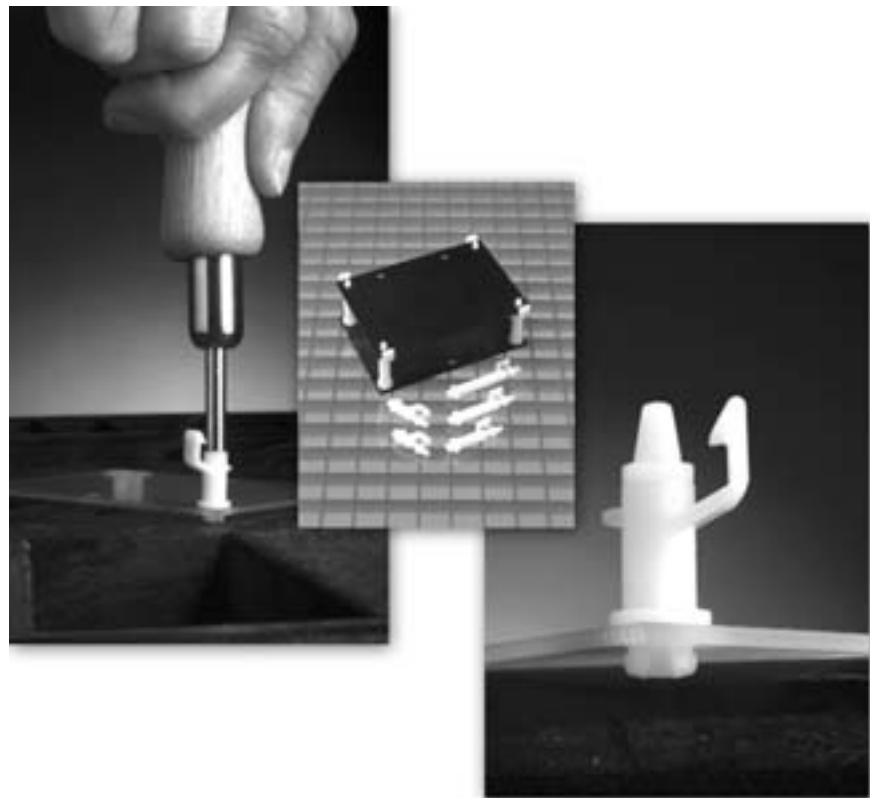
The latch portion holds the daughter board in position under impact vs. a friction fit. The latch eliminates the need for screws or tools that can fall onto the mother board components. Field service is a snap.

Features and Benefits

- No screws or screwdrivers necessary, no loose parts
- Drive pin seats standoff securely in the mother board or chassis with minimum protrusion, to attain maximum packaging density.
- Has high shear and impact resistance.
- Fastener portion accommodates a broad range of hole diameters and thicknesses. High tip out force under impact and vibration.
- Push-Loks are ideal for field service with quick unlatching and re-latching replacement of daughter boards or modules.

- Improve strength and package integrity
- Reduce installation costs
- High shear and impact strength
- Field service friendly latch-in, latch-out design
- Material:
 - Type 66 nylon
 - UL94 V-2
 - Color: natural

1 800.669.9682
1 508.229.2000
www.devicetec.com



DT device
technologies, inc.

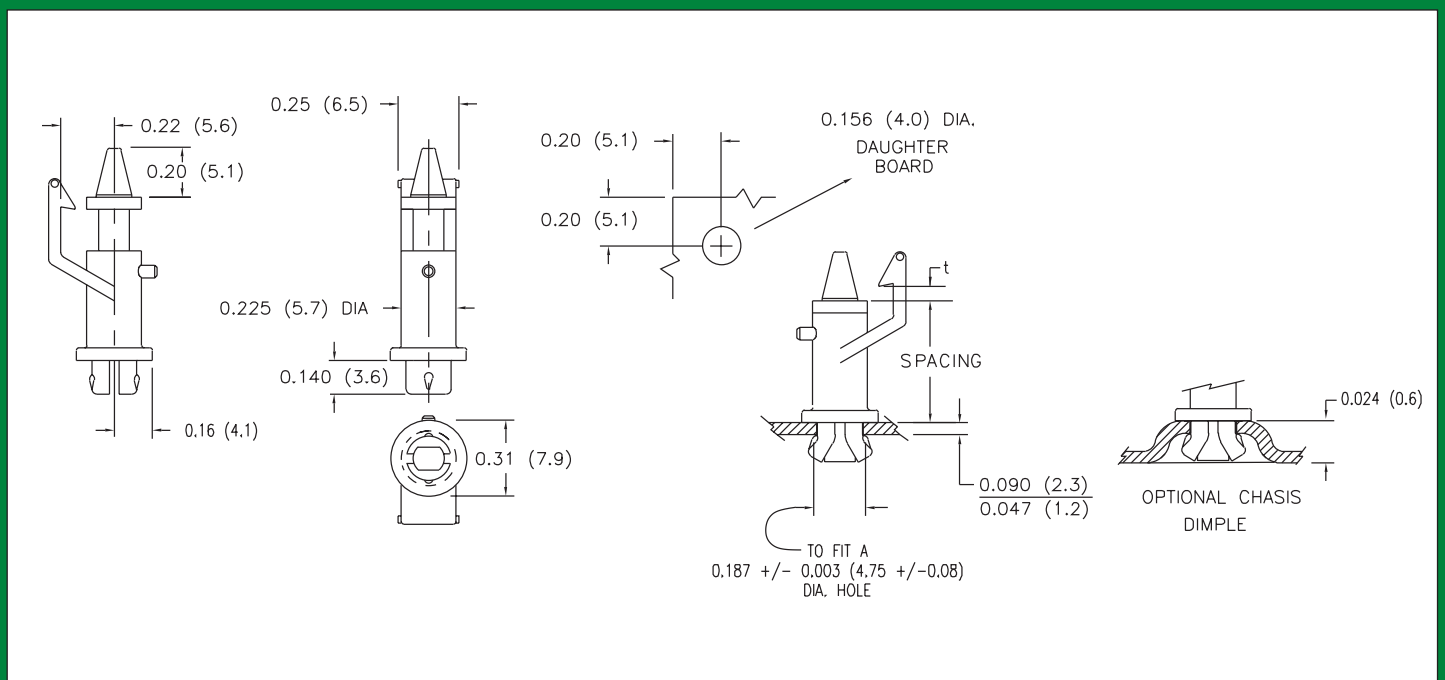
ISO9001:2000 and AS 9100:2001 Certified
Registration No. 950 99 0464

Push-Lok™ PCB Standoffs

- Material: Type 66 nylon, color: natural
- Flammability: UL94 V-2
- Snap-in rivet type
- High tip out force
- High shear strength
- Increase package density
- Minimum board or chassis protrusion
- Assembly tool (P-Punch)—Part Number: 191
- Standard package: 1000 per bag
- Service friendly latch-in, latch-out design

| "t" | Part Number | Spacing | |
|-------|-------------|---------|------|
| | | Inches | mm. |
| 0.075 | 8105-02 | .25 | 6.4 |
| | 8105-03 | .31 | 7.9 |
| | 8105-04 | .38 | 9.5 |
| | 8105-01 | .50 | 12.7 |
| | 8105-11 | .69 | 17.5 |
| | 8105-06 | .75 | 19.1 |
| | 8105-07 | .88 | 23.2 |
| | 8105-08 | 1.00 | 25.4 |
| | 8105-10 | 1.25 | 31.8 |
| | 0.100 | 8107-17 | .26 |

SPECIFICATIONS



3 Brigham Street, Marlborough MA 01752-3140 USA
 Tel +1 800.669.9682 • +1 508.229.2000 • Fax +1 508.229.2622
 E-mail: dti@devicetec.com • www.devicetec.com